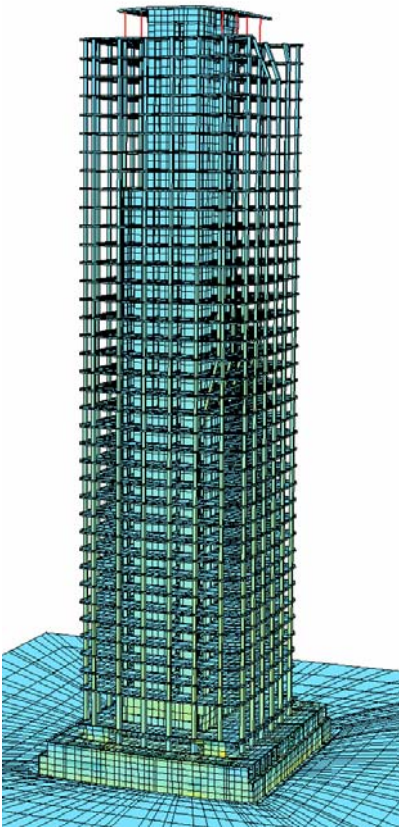
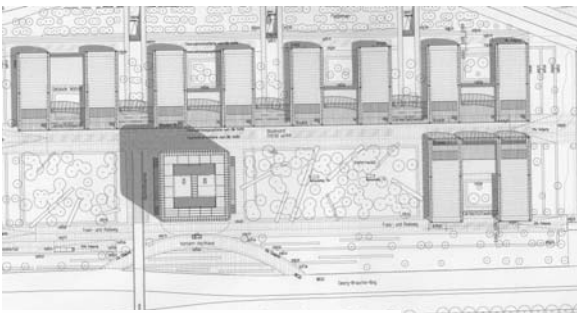
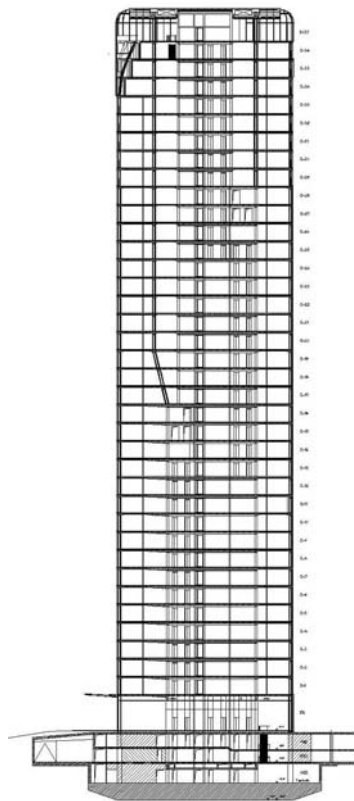




General View (Simulation Architect)



Computer model of complete structure inc. soil



Cross section



View from Campus

Uptown Munich Administration Center with high Business Tower near Munich-Olympiapark

Munich, Georg-Brauchle-Ring 40

Main building with a height of approx. 147 m over ground, four 8 story campus-buildings and a large underground garage for 790 parking lots

Office area	approx. 84.000 m ²
Total investment	approx. 300 Mio EUR

Client:
Georg-Brauchle-Ring Verw. Ges. mbH
Riesstrasse 17, 80992 Munich

Architect:
Ingenhoven, Overdiek und Partner, Duesseldorf

Our Services:

Official checking and supervision

Complete and independent calculation of the complex structure by means of a complete spatial FE-model including soil behaviour

Investigation of various non-linear and time-dependent effects as well as influences of time-dependent phases of construction

Evaluation of threat as a result of progressive collapse due to failure of columns after impact of aircraft or bomb attack